

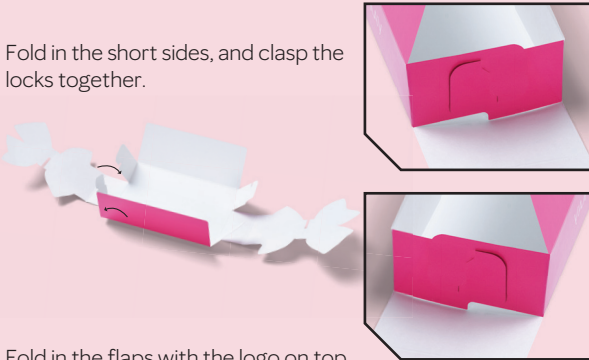


holiday

GIFT BOX ASSEMBLY INSTRUCTIONS

SMALL BOX

1 Fold in the short sides, and clasp the locks together.



2 Fold in the flaps with the logo on top.



3 Interlock the bow using the notches.

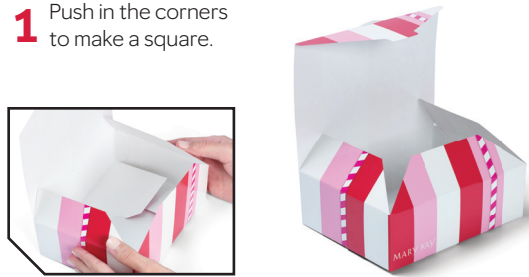


4 Lift up the bow panels to add dimension.



MEDIUM BOX

1 Push in the corners to make a square.



2 Fold in the side panels and front panels.



3 Fold down the lid.



4 Push the tab into the slot, securing the lid.

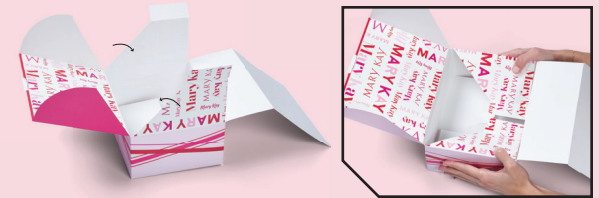


LARGE BOX

1 Push in the corners to create a square.



2 Fold the side flaps into the base of the box.



3 Fold the long front panel into the base.



4 Fold in the side-lid panels, then tuck them into the base.



MARY KAY