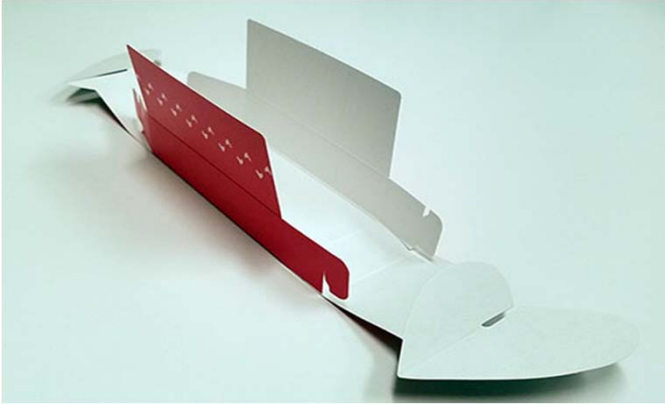


# Mary Kay Instructions for Package Assembly (Small)

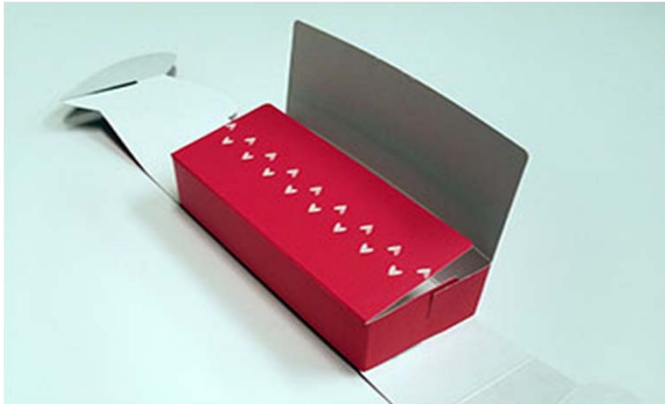
1) Fold up Long Sides



2) Engage locks as shown (2 places)



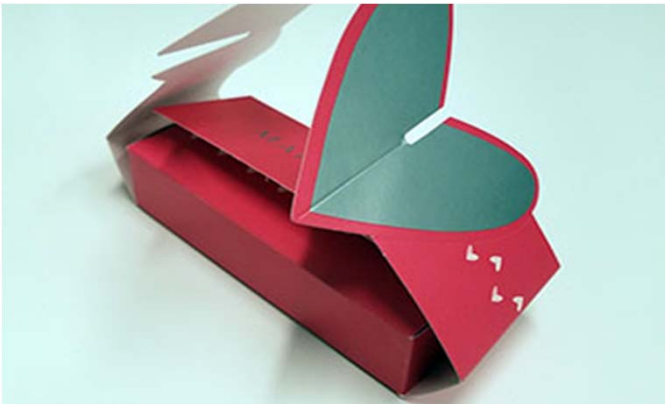
3) Fold in 1st Flap



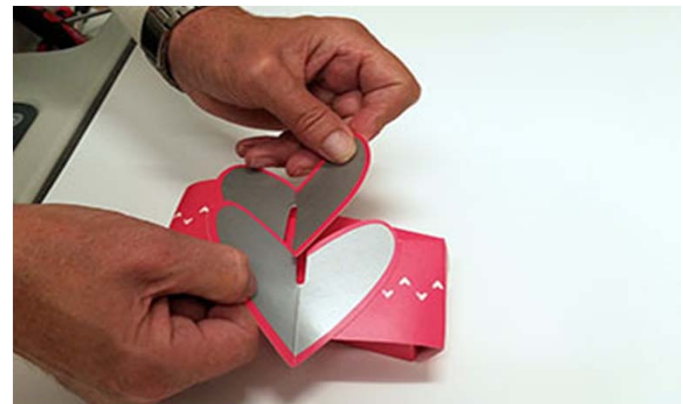
4) Fold Over 2nd Flap



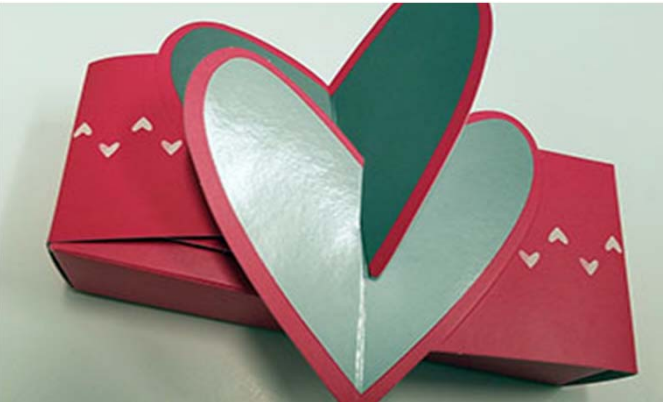
5) Pull Hearts Over the Tray



6) Engage Hearts as Shown



7) Pull Both Hearts into Each Other Completely

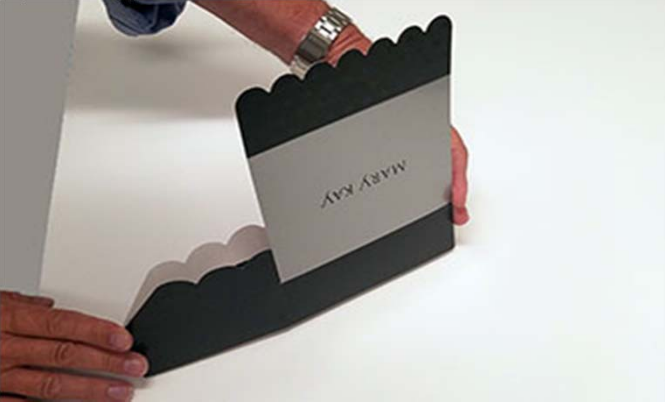


8) Flare Heart Halves Upward for Dimension



# Mary Kay Instructions for Package Assembly (Medium)

1) Push Opposite Corners In



2) Square Package Up



3) Fold Short Panels In



4) Fold Front Panel In



5) Fold Down Lid Flap



6) Push Tab in on Flap into Base Slot to Engage

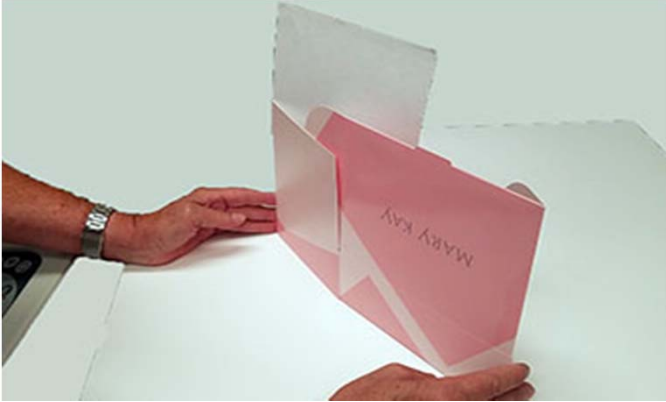


7) Close Lid Completely



# Mary Kay Instructions for Package Assembly (Large)

1) Push Opposite Corners In



2) Square Package Up



3) Fold Long Panels Back



4) Fold Shorter Flaps Down into the Package



5) Fold Front Long Panel Into Base



6) Force Panel into the Base



7) Fold Lids Side Panel into the base



8) Close Lid to Finish

